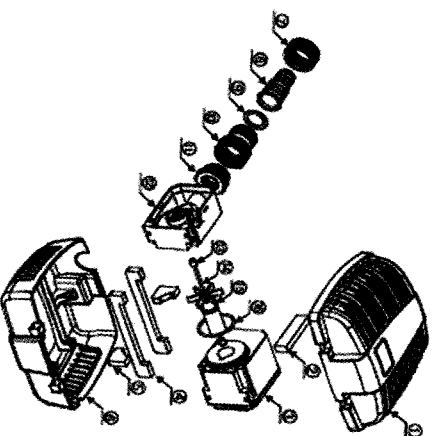
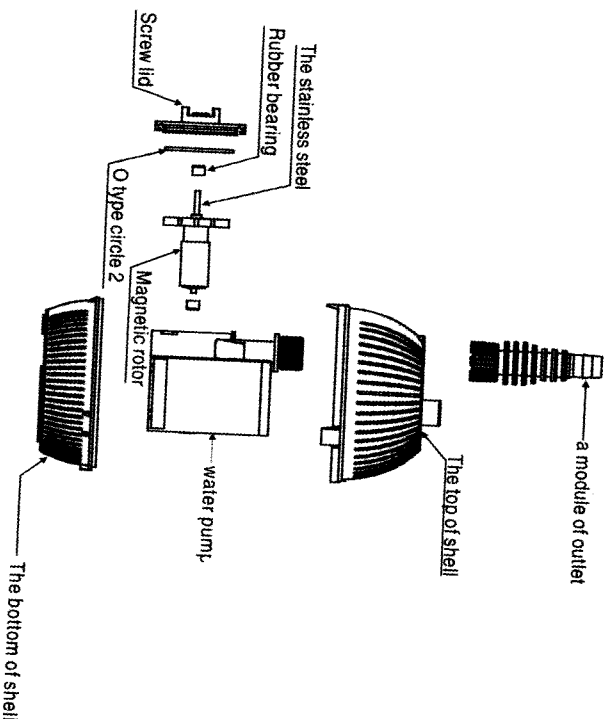


MightyMite Pump - Technical Drawings



No.	Name	No.	Name	No.	Name	No.	Name
1	Upper Filter Case	5	Rubber Strip 3	9	Gasket	13	Rubber Bearing
2	Rubber Strip 1	6	Lower Filter Case	10	Connecting Flange	14	Shaft
3	Motor	7	Nut	11	Connecting Flange	15	Impeller
4	Rubber Strip 2	8	Outlet	12	Impeller Chamber	16	O-Ring

pondXpert MightyMite Pond Pumps



1000 Model



2000-3000 Model

Pond Pump

Model	Power Rating	Max Flow	Max. Head	Dimensions (mm)	Outlet Size	Power Cable
PXM/M01000	16W	1000 LPH	1.5m	ø115x88	12-25mm	10m
PXM/M02000	35W	2000 LPH	2.0m	203x214x103	20-32mm	10m
PXM/M02500	45W	2500 LPH	2.7m	203x214x103	20-32mm	10m
PXM/M03000	55W	3000 LPH	3.0m	203x214x103	20-32mm	10m

Rated voltage 220-240V, 50Hz

Introduction

Congratulations on the purchase of your pondXpert pond pump. Used correctly your pond pump will provide years of reliable service

General safety Instructions

Read and observe all of the instructions clearly before installing, connecting and operating the pump.

Make sure the pump is securely and correctly installed before switching on.

Always disconnect the pump when not in use and when carrying out maintenance.

Always disconnect all equipment in the pond before starting to handle, maintain, repair or install any pond equipment.

The appliance is not intended for use by persons (including children) with reduced physical, sensory or mental capabilities, or lack of experience and knowledge, unless they have been given supervision or instruction concerning use of the appliance by a person responsible for their safety.

Children should be supervised to ensure that they do not play with the appliance.

For safety reasons, servicing or repair of this item should only be carried out by pondXpert.

Never hang or carry the pump by the power cord.

Do not operate the pump with a damaged cord or plug. The supply cord of the appliance cannot be replaced.

If the electrical cord is damaged the product should be scrapped.